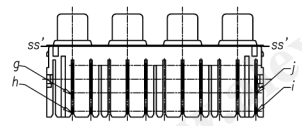
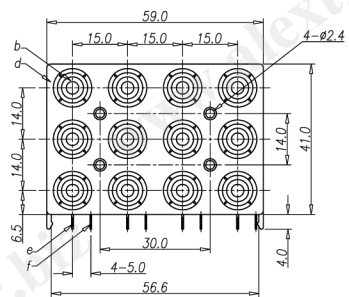
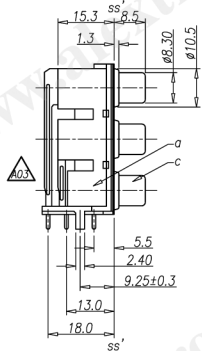


CATEGORY	DESCRIPTION	P/N #
CONNECTOR	RCA Jack, 3*4 Ports, R/A, T/H, With Shielding, Top Screw Holes*4	RJ019R-341X0-XX0A

料號由2RJ34R-19180-XX  
變更為RJ019R-341X0-XX0A

RJ019R-341X0-XX0A

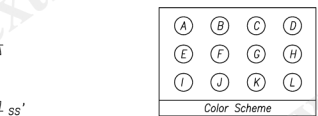
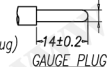


See Color Scheme  
Material & Plating

Table 1	X	Washer Material
2	ABS UL94-HB	
4	PBT UL94V-0	

SPECIFICATION

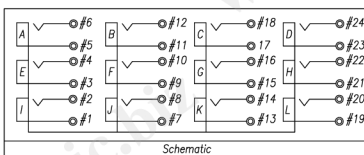
1. Voltage and Current Rating: 12V & 1A
2. Contact resistance: 30mΩ MAX
3. Insulation resistance: 100MΩ MIN @ DC500V
4. Withstand voltage: 500VAC for 1min
5. Insertion Force: 3Kgf MAX
6. Extraction Force: 0.3Kgf MIN
7. Withdraw Force for Center Contact: 0.08Kgf MIN  
(Use a OD=3.2±0.005mm, Length=14±0.2mm Gauge Plug)
8. Terminal Strength: The terminal shall be capable of withstanding a force of 3Kgf applied in any direction for 0.5 secs without losing and breakdown
9. Life test: 1,500 cycles
10. Temperature Range: -25°C~70°C
11. To conform with the "QC-03-045" & "RoHS DIRECTIVE"
12. Solder heat resistance: wave soldering 260°C 5 secs



Color Scheme

XX	Housing	A	B	C	D	E	F	G	H	I	J	K	L
02	Black	Red	Red	Red	Red	White	Blue	White	White	Black	Green	Yellow	Yellow
04	Black	Yellow (012C)	Yellow (012C)	Green (361C)	Black	White	White	Process Blue C	White	Red (361C)	Red (361C)	Red (361C)	Red (361C)
10	Black	Yellow	Yellow	Yellow	Yellow	White	Blue	White	White	Black	Green	Yellow	Yellow
11	Black	Yellow (012C)	Yellow (012C)	Green (361C)	Orange (1505C)	White	White	Process Blue C	White	Red (361C)	Red (361C)	Red (361C)	Red (361C)

Recommend PCB Layout  
(Jack Top View)  
Tolerance: ±0.05mm  
Recommend PCB Thickness: 1.6mm



j	Terminal #3,9,15,21	4	Brass, T=0.4mm	100u" MIN. Tin Plating Over 50u" MIN. Ni Underplating Overall	△
i	Terminal #5,11,17,23	4	Brass, T=0.4mm	100u" MIN. Tin Plating Over 50u" MIN. Ni Underplating Overall	△
h	Terminal #6,12,18,24	4	Brass, T=0.5mm	100u" MIN. Tin Plating Over 50u" MIN. Ni Underplating Overall	△
g	Terminal #4,10,16,22	4	Brass, T=0.5mm	100u" MIN. Tin Plating Over 50u" MIN. Ni Underplating Overall	△
f	Terminal #1,7,13,19	4	Brass, T=0.4mm	100u" MIN. Tin Plating Over 50u" MIN. Ni Underplating Overall	△
e	Terminal #2,8,14,20	4	Brass, T=0.5mm	100u" MIN. Tin Plating Over 50u" MIN. Ni Underplating Overall	△
d	Shielding Plate	1	Brass, T=0.3mm	40u" MIN. CuSn Plating Over 50u" MIN. Ni Underplating Overall	△
c	Outer Contact	12	Brass, T=0.4mm	40u" MIN. CuSn Plating Over 50u" MIN. Ni Underplating Overall	△
b	Washer	12	See Table 1	See Color Scheme	
a	Housing	1	ABS UL94-HB	See Color Scheme	

UNLESS OTHERWISE SPECIFIED TOLERANCES

DECIMALS: X :±0.5 X.X :±0.3 X.XX :±0.2

ANGLES: X :±2° X.X :±1°

**Product Drawing**  
**ALEXTRONIC**

SCALE: 1/1 UNIT: mm DWG. NO: WI-061-707

SIZE: A3 PAGE: 1 OF 1 REV: A03

APPROVED BY: WYX CHECKED BY: Pengjie PREPARED BY: Luquan

CUSTOMER COPY